

SCHIZOPHRENIA IN ADAM PETRAZELLI AS THE MAIN CHARACTER OF WORD ON BATHROOM WALLS FILM

¹Salsabila Safira Salwa

²Suci Budiwaty

¹Universitas Gunadarma, salwasafira18@gmail.com

²Universitas Gunadarma, suci_budiwaty@staff.gunadarma.ac.id

ABSTRACT

Schizophrenia is chronic psychiatric disorder when the sufferers experienced hallucinations, delusions, confusion in thinking, and attitude change. People with Schizophrenia generally experienced symptoms of psychosis, namely the difficulty of distinguishing between realities with the mind that is on itself. The aims of this research were to find out the Schizophrenia symptoms that were suffered by Adam Petrazelli, as the main character in Words on Bathroom Walls film by using Nevid Jeffery's theory and to find out the type of Schizophrenia that was suffered by Adam Petrazelli based on Halonen and Santrock's theory. This research used qualitative method. The writers found that there were 5 symptoms of Schizophrenia that were suffered by Adam Petrazelli, there were four hallucination, eight delusion, one thought and speech disorder, one disturbance of emotional, and one inability to sustain attention. While the type of Schizophrenia that was suffered by Adam was Paranoid Schizophrenia.

Key words: Schizophrenia, Mental disorder, Film, Words on Bathroom Walls.

INTRODUCTION

Literature is a work of fiction which is a creation based on spontaneous emotional outbursts capable of expressing aspect, both linguistic and meaningful. As stated by Klarer (2005) in Muhammad Syarif Hidayatullah (2019, p. 1) to distinguish literary works from ordinary texts such as telephone books, newspapers, or all kinds of legal documents. There are three major genres of literature: fiction, poetry, and drama. One of them is drama. The film is one of the works that includes drama.

Drama is a genre in literature that presents a story verbally in the presence of dialogue or conversation and also through movement between the characters who play a role in it. In drama performances, the most highlighted is the dialogue or conversation that takes place in a stage, because the dialogue or conversation determines the content of the story that is being performed. Drama is also one

of the imaginative literary genres that tell stories through the dialogue of the characters. Drama can be performed in a stage or can be filmed.

According to Hornby (2000) in Elisabet Sipayung (2013, p. 3) the film is a motion picture session using the voice of the cast in telling a story that is shown on television, cinema, or film theatre. The film also a powerful method for educating citizens about mental illness or other social problems. By watching films, citizens will be easily understand the mental illness experienced by someone. Mental illness is various kinds of conditions that can affect the thoughts, feelings, and behavior of a person who has the disease. One type of mental illness is Schizophrenia.

Word on Bathroom Walls film is one of the films that have mental illness theme. The film depicts someone who is suffering mental illness problem played by Adam Petrazelli. *Words on Bathroom Walls* is an American drama

film that is appointed from the novel with the same title written by Julia Walton in 2017. The film directed by Thor Freudenthal tell the story of a teenager, Adam Petrazille (Charlie Plummer), who has a disease of schizophrenia, experiencing a psychotic disorder, a chronic mental disease where a person loses contact with reality, allows visual and hearing hallucinations, paranoia, and delusions.

The writers interested in identifying the mental illness experienced by Adam Petrazille in *Words on Bathroom Walls* film, because the writers found a lot of dialogues and actions from the actors that reflect the symptoms of delusions and hallucinations of this Schizophrenia. The writer wants to dig deeper into the perspective of psychoanalysis of the main character with Schizophrenia, therefore the writers hoped this research will be useful for the readers of literature and psychology, and also provide more knowledge about what is Schizophrenia as one of mental illness.

Nevid Jeffrey (2005, pp. 105-136) defined that a person who is diagnosed with Schizophrenia certainly exhibits characteristics positive symptoms: delusions, hallucinations, disorganized speech, irregular or catatonic behavior, and negative symptoms, namely affective flattening.

delusion is a beliefs that exist in a person who suffers from Schizophrenia in a strong but inaccurate manner, which continues to exist in his mind even though evidence shown that it has no basis in reality. There are four common types of delusions as follows: **Delusion of Persecution** (for example a person with delusion of persecution is believes that someone or something is trying to hurt him); **Delusion of Reference** (he was sure they were the ones that neighbors were talking about who were sitting and chatting in front of their house); **Delusion of Influence**

(he believes that his thoughts, feelings, impulses or action are controlled by outside forces such as evil); **Delusion of Grandeur** (he believes that himself has a special mission or greatest person).

Hallucination is a picture that is perceived without any stimulus from the environment. In *Abnormal Psychology and Modern Life* there are four of Hallucinations: **Auditory Hallucination** (hearing some voices); **Visual Hallucination** (seeing something which is isn't there); **Olfactory Hallucination** (hallucination involves smell); **Gustatory Hallucination** (feeling with the tongue something that isn't there); and **Tactual Hallucination** (hallucination involves the sense touch). Sometimes hallucinations are pleasant, reassuring and neutral. Sometimes it is threatening, punitive, frightening, and even ordering someone to do dangerous thing.

Disturbance of emotional People who have Schizophrenia might speak in a monotone and maintain an expressionless face, or "mask". This doesn't mean that the sufferer doesn't feel emotions; it's just that he or she can't express them directly.

Other mental symptoms Schizophrenics tend to withdraw and do not interact with other people. They enjoy their own world of thought and fantasy. They also have an inability to maintain attention.

According to Halonen and Santrock (1999) in Iis Apriyanti (2014, p. 13) there are four main types of Schizophrenia that generally recognized, and they are:

Disorganized Schizophrenia (Hebephrenic Schizophrenia) is a Schizophrenic disorder that is a person who experiences delusions and hallucination that have little or no identifiable meaning- hence, people with Schizophrenia of this type are

characterized by irregular and difficult to understand speech and behavior. Sometimes they can laugh for no apparent reason, or look busy with the perceptions they have.

Behavior withdraws from human contract and may revert to childlike silly attitude and behaviors.

Catatonic Schizophrenia is a schizophrenic disorder characterized by bizarre motor behavior, sometimes in the form of fainting completely immobile. Even in this state of fainting, Catatonic Schizophrenics are completely aware of what's going on around them. An individual in a catatonic state sometimes shows waxy flexibility.

Paranoid Schizophrenia is a Schizophrenic disorder characterized by delusions of reference, grandeur, and abuse. Delusions usually form complex and intricate systems based on complete misunderstanding of actual events. A person with Paranoid Schizophrenia usually shows abnormal behavior as if he is being watched, so that he often shows feelings of anger, anxiety, and even hatred towards someone. It is not uncommon for schizophrenics to develop all three delusions in the following order. *Undifferentiated Schizophrenia* is a combination of various subtypes of other Schizophrenia. A Schizophrenic disorder characterized by irregular behavior, hallucinations, delusions, and mismatch. This category of Schizophrenia is used when a person's symptoms don't meet the criteria for more than one other type.

RESEARCH METHOD

This research used qualitative method to present the data because all the data are analyzed descriptively. By using this method, the writers explain the facts that occur in the object of the research and the result is an explanation of words. To collect the data, the

writers searched for the film *Words on Bathroom Walls* on the website, then downloaded, watched, and understood the plot of the film, after that the writers took notes of the parts that were included into Schizophrenia symptoms. The next step, took some scenes and dialogues from the film and then classified them into symptoms of Schizophrenia, namely Hallucinations, Delusions, Thought and speech disorders, Emotional disturbances, and Inability to sustain attention.

The data collection was carried out by using Sudaryanto's theory (1993) in Andhika Somantri (2016, p. 30) where the writers used note-taking techniques or note-taking methods. After that the writers described and explained the scenes and dialogues that had been classified into the symptoms of Schizophrenia. Specific symptoms of Schizophrenia in each scene experienced by the main character, after the scenes and dialogues were analysed. It can be seen that the type of Schizophrenia that was suffered by Adam Petrazelli was Paranoid Schizophrenia.

RESULT AND DISCUSSION

After conducted the research on Schizophrenia that suffered by Adam Petrazelli, the writers found that there were 5 symptoms of Schizophrenia that were suffered by Adam Petrazilli. there were hallucination (4 data), delusion (8 data), thought and speech disorder (1 datum), disturbance of emotional (1 datum), and inability to sustain attention (1 datum). While the type of Schizophrenia that was suffered by Adam was Paranoid Schizophrenia.

Hallucinations

Hallucination is divide into auditory and visual hallucination. Adam's first auditory hallucination is after he started to go to doctor for eye examinations because his mother and

family thought there was something wrong with his eyes, then after he woke up the next day he began to hear sounds that he had ever heard before (figure 1 & 2).

In (figure 3) the camera began to move in all directions of the room and Adam began to hear the source of the sound from the doorway in a dark room. The voice started calling out his name. Adam began to hear voices that bothered him, which in fact everything he had heard was nothing.

The visual hallucination that was suffered by Adam happened when his mother separated from his father, Adam was the only child who had to take care of his mother. Adam's mother, Beth, always contemplated and cried until Adam decided to cook food everyday for his mother besides he really liked cooking. Then while he was visiting a restaurant to see how to cook an oasis and recorded all the ingredients, he looked at his left side, he felt that someone was watching him. As we can see from the scene that there is no one sitting in the corner of the seat on the left side of Adam (figure 4), from Adam's side we can see there is someone whose name is "Joaquin" who is watching and noticing him (figure 5).

Then the viewer is slowly allowed into reality of the other perspective for example, Figure 6, 7, and 8. It happens when Adam realized that he is Schizophrenic and tries to socialize.

Todd: *we finally got invited to one of Sarah's parties*

I'll pick up you tonight?

Adam: *who's that?*

Todd: *Sarah? The love of my life?*

Adam: *yeah, right. Sarah.*

The Figures and dialogue above showed when Adam's friend "Todd" was talking about Sarah's birthday while they were walking out of the classroom. In figure 6, Adam's Schizophrenia relapsed and saw a

beautiful woman who was dancing, her name is "Rebecca" (figure 7) he unconsciously asked his friend and at that time his friend was confused about what was Adam is talking about. Then we can see when Adam realized that it was just a hallucination; he immediately brushed off his question and answered his friend's conversation, which had been interrupted (figure 8). Adam realized that it was all hallucination.

Delusion

Delusion is divide into *Delusion of Persecution*, *Delusion of Reference*, *Delusion of Influence*, and *Delusion of Grandeur*. Adam has experienced, first is *the delusion of persecution*. Adam has serious mental illness when an accident that occurred during lab hours. Adam and his friend were doing experiments in the Chemistry Lab. And when he looked at the measuring cup of chemistry there was a black liquid (figure 14), which then called out of his name. Adam searched for the source of the sound (figure 15), which he turned out from a door (figure 16).

Adam became increasingly paranoid and behaved erratically in his class. And he became fear and panic (figure 17). All the students fixed on Adam, confused about what Adam was doing which actually didn't happen (figure 18). But Adam felt that someone was haunting him but he could not see (figure 19), because of his delusions, he made things in the lab fell and immediately everything turned to be messed (Figure 20).

After the incident in the chemistry lab, Adam was immediately taken to the hospital for psychiatric examination. Finally the doctor came and told him that Adam had suffered Schizophrenia (figure 21).

A chronic mental disorder in which a person loses touch with reality allowing for visual and auditory

hallucination. He has three persons on his hallucination and also he had some delusions on himself.

The second is Adam has *delusion of reference* in which he woke up from his sleep and was going down to the first floor of his house, he saw Paul was writing an email letter on his laptop (figure 22), when he approached it he saw Paul was sending the letter to sister Catherine (figure 23) and he thought it was Paul who ordered sister Catherine to expel him from school. Actually it is not the content of the letter.

Adam: *it was you!*

*I saw you writing that email to her
I know you wanna send me away.*

Paul: *Adam, you need to calm down.*

Beth: *No one wants to send you away.*

A person with Schizophrenia has a fear and the thought that he always feels that other people talked about him without knowing the truth, as happened to Adam at this time, he felt that it was Paul who asked sister Catherine to suspend him. Then the next day Adam was called to come to sister Catherine's room and there were already her parents and sister Catherine, when sister Catherine explained what she wanted to say, Adam didn't accept this decision and he was very angry with Paul (figure 24).

The third is Adam suffered from *delusion of influence*. It can be seen when Adam had dinner with his parents. Paul asked Adam how the first day Adam went to his new school. After Adam told him about it, evil voices then come to him, a voice explained that he was an unlucky child (figure 25), who made his mother's life change and also made his father leave them. After he heard the sound, it made him feel like a nightmare. Until he was tired of the voices he heard, then he started trying to take the medicine that his doctor had given to him (figure 26).

He hoped that it would make him well and not hear the voices he had been hearing.

Adam's mom: *I think Paul was referring to your coursework.*

Adam: *it was fine; it's a good school*

Someone: *Adam*

Adam

*You're running your mother's life,
Adam.*

You're not the son she wanted.

This is why your father left.

*He knew something was wrong with
you.*

And soon, everyone at your new school.

Will know the truth.

*That's when they'll finally get rid of
you.*

A person with Schizophrenia thinks that he is directed by malicious talk that can disturb his mind. In fact it is not real only the feeling and thought of those who have this disease.

The fourth is Adam has *delusion of grandeur*. He believed that he is the person who is really lucky; he also felt that the only person who was never rejected was Jesus, and that makes him able to be in the school and feels that he will be accepted in the school (figure 33).

Sister Catherine: *I'm glad you could
all*

Adam: *yeah, well, the only person*

*The one who can't resist me is Jesus,
right?*

{..... everyone shocked}

Adam suddenly shocked everyone for what he said (figure 34 & 35), but his mother started to cool off the atmosphere by fending off what Adam had been talking about in front of sister Catherine. From the dialogue and scenes, we can say that Adam feels special. It means that Adam has *Delusion of grandeur*.

Thought and Speech disorder

The thought and speech disorder which is suffered by Adam is shown

when he was having dinner with his parents. Paul asked how was the day going to the new school, Adam gave him an answer that was not connected to the question and he composed his own words (figure 36), by telling how Saint Agatha was made. Starting with a woman who rejected a man who loved her and had her body cut off. As we can see in (figure 37 & 38) Paul's expression was very shocked and he was amazed by Adam's answer that the answer was completely off the mark from the question.

Paul: So, Adam

Did you lear something new today?

Adam: But that's his problem. Not mine.

I learned that Saint Agatha

Was named after a woman

Who refused a man's advances

And subsequently had her breasts hacked off

As penance.

From the dialog and scene above, it shows that Adam's answer is very different from what Paul has asked about, so that he can be categorized into one of the symptom of Schizophrenia namely thought and speech disorder.

Disturbance of emotional

In this film, Adam has *disturbance of emotional* expression which shown through his minimal facial expression. It happened when he told Maya about his bad experience at school, which he used to be bullied because they knew about his illness (figure 38), another scene (figure 39) showed when his mother told him that she is pregnant with his stepfather's.

From the scene above Adam has a facial expression that does not match with his feelings. He is a little difficult to put out a real expression so that it looks like he is masked, it can be categorized into the characteristics of Schizophrenia, namely *disturbance of emotional*.

Inability to sustain attention

Adam also suffered by *inability to sustain attention*. He always seems unfocused when he talked to Maya because his hallucinatory friend always distracted his eyesight. Here we can see that Adam was not focused when he met Maya at the first time and she invited Adam to chat but he did not realize that his vision was pointing to Rebecca, which was actually not there, and Maya felt confused she thought that there was something strange about Adam's vision. When Maya thought Adam is weird, Adam only said that he had a headache syndrome.

Maya: hey, here

Adam: yes, hi

Maya: you're a little bit weird?

No offense, but do you have special needs?

Adam: hmm I have chronic headache syndrome.

From the scene and the dialog above, every time Adam talked to his interlocutors his eyesight was always disturbed by those hallucinations. It made the speaker looked confused and felt weird. It can be categorized into symptom of Schizophrenia, namely *inability to sustain attention*.

Based on the five symptoms of Schizophrenia above namely hallucination, delusion, thought and speech disorder, disturbance of emotional, inability to sustain attention. The type of Schizophrenia that appears in this film is categorized into Paranoid type, because the main character experienced some delusion, and auditory hallucination without disorganized speech.



Figure 1



Figure 2



Figure 3



Figure 4



Figure 5

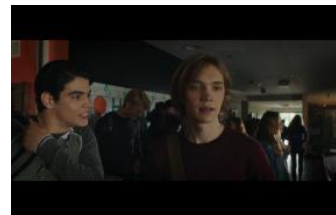


Figure 6

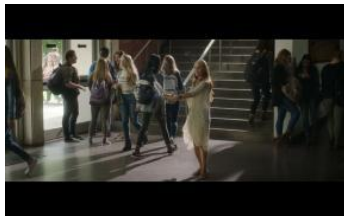


Figure 7

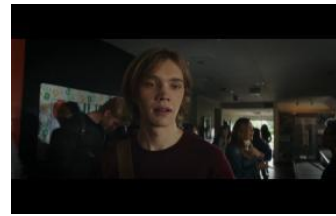


Figure 8



Figure 9



Figure 10



Figure 11



Figure 12



Figure 13

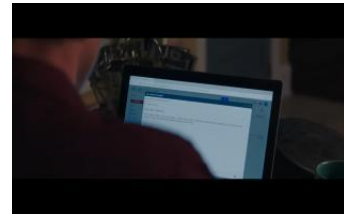


Figure 14



Figure 15



Figure 16



Figure 17



Figure 18

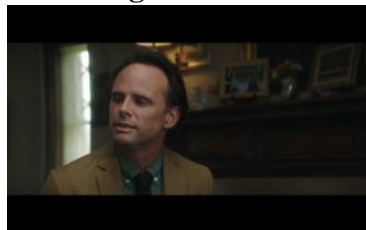


Figure 19

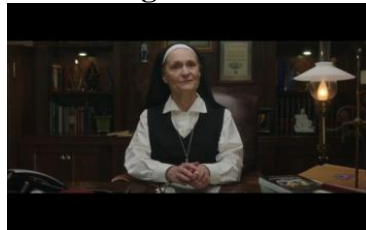


Figure 20



Figure 21

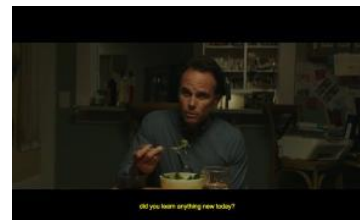


Figure 22



Figure 23

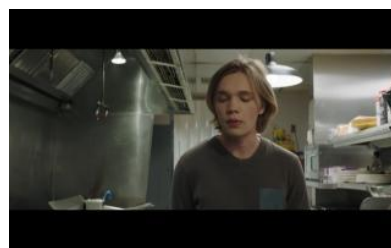


Figure 24



Figure 25

CONCLUSION AND SUGGESTION

The main character in the film *The Words on Bathroom Walls* named Adam Petrazelli suffered a mental illness. Based on the data that has been discussed, the writers concluded that the symptoms of Schizophrenia that are suffered by Adam Petrazelli namely hallucination, delusion, thought and speech disorder, disturbance of emotional, inability to sustain attention. Often Adam feels that he has several friends in his hallucinations which are actually not real. All of that can be seen from several scenes and also the dialogue when this film is played.

Afterwards, from the five symptoms of Schizophrenia above namely hallucination, delusion, thought and speech disorder, disturbance of emotional, inability to sustain attention, it can be concluded that the type of Schizophrenia that appeared in this film is categorized into Paranoid type, because the main character experienced some delusion, and auditory hallucination without disorganized speech.

REFERENCES

- Halonen & Santrock in Iis Apriyanti (2014). *Schizophrenia in Uninvited Film*. Jakarta: State Islamic University of Syarif Hidayatullah.
- Hornby, A. (2000) in Elisabet Sipayung. (2013). *The analysis of code mixing in Film from Bandung with Love*. Journal of Linguistics of FBS UNIMED, 2 (1), doi: 10.24114
- Klarer, M. (2005) in M. Syarif Hidayatullah (2019). *Imagery Found in Kahlil Gibran's Selected Poems*. Universitas Islam Negeri Alaudin Makassar
- Nevid Jeffrey S, e. a. (2005). *Psikologi Abnormal (jilid 1 dan jilid 2, judul asli: Abnormal Psychology in a Changing World 5th Edition)*. Jakarta: Erlangga.
- Sudaryanto (1993) in Andhika Somantri (2016). *Analisis Penggunaan Keigo dalam Lingkungan Kerja pada Film Kenchou Omotenashi Ka*. Universitas Pendidikan Indonesia.